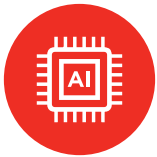


# Yoga Slim 7x (14", 9)

## Unleash your creative freedom.

Level up with the Yoga Slim 7x, a Copilot+ PC! It's not just smart—it's your creative sidekick that knows what you need before you do. AI? More like A-Why-Hasn't-This-Been-Done-Before! With this laptop, it's less about the specs and more about the flex. Crafted for creatives, this is the tech you've been dreaming of. Not just keeping up, but setting the pace, this sleek AI powerhouse is shaping the future, making every moment of creation as lit as your ideas. Welcome to the next evolution of computing.



### Built for AI

Future-proof your Yoga Slim 7x with Snapdragon® X Elite, featuring the Qualcomm® Hexagon™ NPU delivering 45 TOPS of AI performance, enabling multitasking and game-changing AI capabilities. Boasting 4.5x faster AI processing than competitors and up to 10x faster AI performance than x86 PCs, Snapdragon® X Elite redefines the new generation of AI PC standards. This means you can rapidly apply complex image and video effects in seconds, enhancing your creative capabilities without any delays. Unlock more personalized and powerful experiences with industry-leading on-device AI.



### Unlock next-gen performance & efficiency

Experience the unbeatable performance and efficiency of the Yoga Slim 7x. With 2x faster GPU and CPU performance, chip-to-cloud security, and multi-day battery life, stay productive anywhere. Fueled by the Snapdragon® X Elite platform, it sips 68% less power than competitors. Collaborating seamlessly with the Lenovo AI Core, Snapdragon® X Elite optimizes tasks like 3D rendering and video editing, extending battery life while ensuring silent operation. Together, they evolve with you, setting a new standard in performance and efficiency.



 Copilot+ PC



### Every pixel tells a story

Step up your screen game with the Yoga Slim 7x PureSight OLED. This 14.5" touchscreen dazzles with 3K Dolby Vision® and a blazing 1000 nits peak, so every detail is lit. Digital artists, bask in the glow that even the sun can't beat and dive into a color pool with 100% sRGB/P3 range that's pure rainbow magic. For the visual connoisseurs, expect nothing but pixel-perfect precision with a  $\Delta E < 1$ . And wave goodbye to eye strain, thanks to TÜV Low Blue Light and EyeSafe cert.—scroll, edit, and create in total comfort. This is your canvas for brilliance, where every hue is a statement and every swipe is a revelation. Welcome to visual nirvana.



### Beautifully suite

Level up the way you interact with your device thanks to the Yoga Premium Suite. Command any room anywhere with four studio-grade microphones that strip background noise from your voice while the four Dolby Atmos® tuned speakers immerse you in cinematic sound. Don't forget to look your best with the FHD MIPI IR camera, which keeps you centered in the frame via Windows Studio Effects. A flash of inspiration? Let your fingers fly across the enlarged trackpad and intuitive 1.5 mm travel Yoga Keyboard, delivering a comfortable typing experience with its super cool concave anti-grease caps. That all sounds...pretty...suite.



[WWW.LENOVO.COM](http://WWW.LENOVO.COM)



Snapdragon is a product of Qualcomm Technologies, Inc. and/or its subsidiaries.

# Yoga Slim 7x (14", 9)

## SPECIFICATIONS

Yoga Slim 7 14Q8X9\*

### PERFORMANCE

#### Processor

Snapdragon® X Elite X1E-78-100, 12 CPU Cores

#### Operating System

Windows 11

#### Graphics

Snapdragon® X Elite | Qualcomm® Adreno™ GPU

#### Memory

16 GB / 32 GB LPDDR5X; 8448 MHz Dual Channel

#### Storage

PCIe Gen 4 2242 M.2: 512 GB / 1 TB

#### Camera & Microphone

FHD MIPI IR Camera

Camera Shutter

Four Microphones

#### Audio

4 Speakers; Dolby Atmos® Audio

#### Battery<sup>1</sup>

70Whr

**Movie Playback** : Up to 22.8 Hours

**Web Browsing** : Up to 15.1 Hours

**Battclues2.0** : Up to 12.1 Hours

**Rapid Charge Express** : 15 minutes @ 4 Hours

### DESIGN

#### Display

14.5" 3K (2944 x 1840) 90Hz 16:10 PureSight OLED, 1000 nits peak, Delta E<1, 100% sRGB, 100% P3, VESA Certified DisplayHDR™ True Black 600, Dolby Vision®, TÜV Low Blue Light Certification, Glass, Touch

#### Dimensions (W x D x H)<sup>1</sup>

(mm) : 325 x 225.15 x as thin as 12.9

(inches) : 12.80" x 8.86" x as thin as 0.51"

#### Weight

Starting at 1.28 kg (2.82 lbs)

#### Hinge

165° ± 5°

#### Color

Cosmic Blue



### CONNECTIVITY

#### WLAN

WiFi 7

#### Bluetooth®

Bluetooth® 5.3<sup>2</sup>

#### Input/Output (I/O) Ports

##### Left

2 x USB Type-C™ Full-function (40 Gbps, PD 3.1, DP 1.4)<sup>3</sup>

##### Right

1 x USB Type-C™ Full-function (40 Gbps, PD 3.1, DP 1.4)<sup>3</sup>

### PRELOADED SOFTWARE

- Windows 11 Home/Pro
- Lenovo Vantage
- Lenovo Smart Noise Cancellation (Elevoc)
- Microsoft 365 Trial
- McAfee® LiveSafe™
- Dolby® Access (Dolby Vision® & Atmos®)
- X-Rite Color Assistant For ARM

### NOTEABLE MENTIONS

- Plastic-free Packaging
- EPEAT® Gold-registered<sup>4</sup>
- 50% Recycled Aluminum in the Bottom Cover
- ENERGY STAR® rated

<sup>1</sup> All battery life claims are approximate and based on two methods of testing: MobileMark® 2025 battery life benchmark @ 200 nits brightness and continuous 1080p video playback @ 150 nits brightness on the latest update of Windows 10. Actual battery life will vary and depends on many factors such as product configuration and usage, software use, wireless functionality, power management settings, and screen brightness. The maximum capacity of the battery will decrease with time and use.

<sup>2</sup> Bluetooth® version depends on OS.

<sup>3</sup> Pending USB4 Certification July 2024, subject to certification timing.

<sup>4</sup> EPEAT™-registered where applicable — see [www.epeat.net](http://www.epeat.net) for registration status by country.

## LENOVO SERVICES

#### Lenovo Premium Care Plus

Lenovo Premium Care Plus is the ultimate PC support experience with you as our priority 24/7. Enjoy personalized hardware and software support from a global network of elite technicians, along with accidental damage protection, fast repairs with onsite support, extended battery warranty, data migration assistance, and smart performance solutions that optimize PC performance and security.

#### Lenovo Smart Performance

Smart Performance Services within Lenovo Vantage will keep your system running at optimum performance and proactively fix issues that affect PC performance, internet performance, remove malware, and improve device security.

#### Lenovo Accidental Damage Protection

Avoid the hassles of unexpected damage & repair costs. With coverage for drops, spills, electric surges, and broken LCD screens, accidental damage protection makes it easy to repair to your PCs and ensures your device is up and running fast.

#### Lenovo CO<sub>2</sub> Offset Services

Offset the carbon emissions of your PC with Lenovo CO<sub>2</sub> Offset Services – an easy and transparent solution to offset emissions across the average lifecycle of your device. These offsets are invested in UN-approved initiatives like renewable energy or ecological projects, thus contributing towards a more sustainable future.

#### Lenovo Sealed Battery Warranty

Long-lasting battery life is not just a feature but a necessity to help you stay productive and connected all day long. Protect your PC's sealed battery from degradation, enjoy hassle-free battery replacement service, and safeguard your PC from future battery failure with our Sealed Battery Warranty Service.

#### Lenovo Warranty Extensions (Up to 3 Years Duration)

Gain complete peace of mind by extending your base warranty to up to 3 years and minimize unexpected repair costs.

## OPTIONS & ACCESSORIES



Yoga TWS\*



Lenovo Yoga 14.5" Sleeve



Lenovo Yoga Pro Mouse

\* Full headphone functionality requires upcoming software update in Oct 2024.

## McAfee® LiveSafe™

Register McAfee® to enjoy these benefits in your FREE 30-day trial.

- Award-winning Antivirus
- Password Manager
- Safe Web Browsing
- Multi-device Compatibility
- Identity Theft Protection
- Free Customer Support

\* Example of Lenovo catalogue naming convention

Yoga	Slim	7	14	Q	8	X	9
Sub-brand	Form Factor	Positioning	Screen Size	Platform Code	Generation		

[WWW.LENOVO.COM](http://WWW.LENOVO.COM)

Lenovo reserves the right to alter product offerings and specifications at any time, without notice. Lenovo makes every effort to ensure accuracy of all information but is not liable or responsible for any editorial, photographic or typographic errors. All images are for illustration purposes only. For full Lenovo product, service and warranty specifications visit [www.lenovo.com](http://www.lenovo.com). Lenovo makes no representations or warranties regarding third party products or services. All rights reserved. **Trademarks:** AMD, the AMD Arrow logo, Ryzen, Radeon, FreeSync and combinations thereof, are trademarks of Advanced Micro Devices, Inc. Microsoft and Windows are registered trademarks of Microsoft Corporation in the United States and/or other countries. 3DMark is a registered trademark of Futuremark Corporation. Other names are for informational purposes only and may be trademarks of their respective owners. Other company, product and service names may be trademarks or service marks of others. Visit [www.lenovo.com/lenovo/us/en/safecomp/](http://www.lenovo.com/lenovo/us/en/safecomp/) periodically for the latest information on safe and effective computing. ©2024 Lenovo. All rights reserved.



Snapdragon is a product of Qualcomm Technologies, Inc. and/or its subsidiaries.

Lenovo